



Automotive Equipments

www.bimateknoloji.com

Contents

Suspension Tester	01
Passenger Car Light Truck Brake Tester	02
Side Slip Tester	03
2WD Dinamometer Power Test	04
4WD Dinamometer Power Test	05
Scissor Lift 3.2 Ton	06
Scissor Lift 5 Ton	06
Paint Thickness Gauge (LS220)	07
Paint Thickness Gauge (Wurth)	08
OBD Diagnostic Scanner (Wow - Snoopert+)	09
OBD Diagnostic Scanner (X-431 Euro Mini)	10
Cooling Fan	11
Compressor	11

Suspension Tester

Shock absorbers of the vehicle are controlled by shock absorption efficiency method.

Pull wheels on to the test plates and apply to brake.

When the process is started, the vibrations are applied to the left and right wheels in the form of vibrations.

After the completion of the process, the digital and graphical measurement result evaluation does reflectes to the screen as percentage.

The height of absorption shows the efficiency of shock absorber.

Suspension tester does use EUSAMA method for mesurmant



Technical Data

Axle Load: 3000 kg

Vibration amplitude: 6 mm

Vibration frequency: 23 Hz

Weight: 400 kg

Dimension: 400x2340x320 mm

Supply voltage: 380 V

Loadcell quantity: 4 adet

Engine power: 2x1.1 kW

Product Information

23" LED Screen

PC

Laser printer

PC cart (620x482x1000mm)

Remote control (15 m)

Graphic printout

Passenger Car Light Truck Brake Tester



Product Information

23" LED screen

PC

Laser printer

PC cart (620x482x1000mm)

Remote control (15 m)

Test result printout

Automatic passed / failed evaluation

Test of vehicle braking efficiency is done by applying force against the roller. The wheels are stopped on the roller. When the process is started, the rollers start to rotate by electric motors. As soon as the driver starts pressing by pressing the brake, the brake force from the vehicle is transmitted to the computer as electronic signals via the sensor. The software analyzes the electronic signals and transfers the test results to the screen. The Tester is remotely controlled and offers an easy operation through the electronic lock which facilitates the vehicle's exit.

Measurement values

Front left and right braking force [N]

Difference between front brakes [%]

Rear left and right brake force [N]

Difference between rear brakes [%]

Total braking efficiency [%]

Right hand brake force [N]

Left hand brake force [N]

Total hand brake effectiveness [%]

Deceleration acceleration [m/s²]

Technical Data

Axle load : 4 ton

Test speed : 5 km/h

Measurement range : 8 kN

Weight : 500 kg

Dimension : 660x2340x320 mm

Roller diameter : 190 mm

Roller length : 700 mm

Engine power : 5,5 kW

Supply voltage : 380 V



Side Slip Tester

- Sideslip tester inspects the matching between wheel camber and wheel toe-in, toe-out measurement.
- Quick inspection with seconds of front and rear axle geometry
- Depending on tracking, the test plate is pushed to the side and km/m deviation is displayed
- Right/Left slip direction indicator
- Inspection speed
- Test result



Technical Data

Axle load : 3500 kg

Test range : +/- 50 mm

Weight : 100 kg

Dimension : 830x830x320 mm

Supply voltage : 5 V

Product Information

23" LED Screen

PC

Laser printer

PC cart (620x482x1000mm)

Remote control

Graphic printout

2WD Dynamometer (Power Test)

It measures the vehicle's engine power, wheel power and power losses in power trains in [KW and HP], as well as it measures the vehicle's engine torque in [Nm] also torque losses in the wheel and the drive train. Installation is done with ramp platform (above ground) or built-in (in the ground). There is an technical drawing for both methods.

Technical Data

Measuring engine power in [KW and HP] and torque in [Nm]

Measuring wheel power in [KW and HP] and torque in [Nm]
 Automatic detection of ambient meteorology (temperature, humidity, air pressure) and correction of measured values according to selectable DIN, EEC, ISO, JIS, SAE standards

Automatic transmission vehicle test option

Pneumatic lifting lock for vehicle exit

Driving direction: double direction

Measurement accuracy: +/- 3%

Axle load: 3500 kg

Weight: 650 kg

Maximum test speed: 240 km / h

Maximum engine power: 400 kW

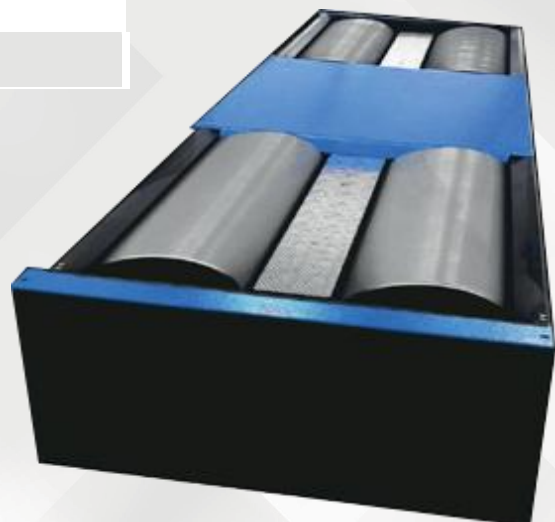
Dimension: 820x2340x320 mm

Roller diameter: 300 mm

Roller length: 700 mm

Supply voltage: 12V

Vehicle wheel lifting air pressure: Min: 6 bar, Max: 10 bar



Product Information

23" LED Screen

PC

Laser printer

PC cart (620x482x1000mm)

Remote control (15 m)

Detailed graphic printout

4WD Dynamometer

Product Information

23" LED Screen

PC

Laser printer

PC cart (620x482x1000mm)

Remote control (15m)

Detailed graphic printout

Driving direction : double direction

Measurement accuracy : +/-%3

Axle load : 3500 kg

Weight : 1950 kg

Maximum test speed : 240 km/h

Maximum engine power : 400 kw

Dimension : 2340x5656x424 mm

Roller diameter : 300 mm

Roller length : 700 mm

Supply voltage : 12V

Vehicle wheel lifting air pressure : (6 – 10 bar)

Min. 6 bar, max 10 bar

It measures the vehicle's engine power, wheel power and power losses in power trains in [KW and HP], as well as it measures the vehicle's engine torque in [Nm] also torque losses in the wheel and the drive train.

Installation is done with ramp platform (above ground) or built-in (in the ground). There is an technical drawing for both methods



Technical Data

Measuring engine power in [KW and HP] and torque in [Nm]

Measuring wheel power in [KW and HP] and torque in [Nm]

Automatic detection of ambient meteorology (temperature, humidity, air pressure) and correction of measured values according to selectable

DIN, EEC, ISO, JIS, SAE standards

Automatic transmission vehicle test option

Pneumatic lifting lock for vehicle exit

Scissor Lift (3.2 Ton)

Technical Data

125% Dynamic Loading and 150% Static Loading Test

Aluminum Engine that Prevents Overheating

IP54 ABS Control Box And 24 v Operation Key

24 v Upper Limiting Mechanism

Hydraulic Pressure Preset, Protection from Overcapacity Loading

Anti Surge Valve In The Failure Or Explosion Of The Hydraulic System (antisörçh)

Locks Up

Scissor Blades 5mm And 10mm Thicker Than All Equivalent Products



Siccors Lift (5 Ton)

Technical Data

125% Dynamic Loading and 150% Static Loading Test

Aluminum Engine that Prevents Overheating

IP54 ABS Control Box And 24 v Operation Key

24 v Upper Limiting Mechanism

Hydraulic Pressure Preset, Protection from Overcapacity Loading

Anti Surge Valve In The Failure Or Explosion Of The Hydraulic System Locks Up and Stops
It Has Electro-Hydraulic Lock Mechanism

Platform Has Turntable For Front Wheel Control

Paint Thickness Gauge (Integral Lite)

3 measurement speeds per second

Cryogenic special sensor

Iron and aluminum

Automatic switching on surfaces

Measurement between 0-2000 microns

123/138/174 Half measurement

110/120/130 Decimal measurement

Abs Polymer Material



INTEGRAL LITE

Based on the principle of LITE model, it optimizes and uses OLED display to improve low temperature working performance.

The extreme operating temperature of the LITE can reach -50°C, provided that a low temperature resistant battery is used.

- * View maximum, minimum, average and read counts
- * Can recall 10 measurements
- * Resolution up to 0.1μm
- * Accuracy $\pm(2\%+1\mu\text{m})$
- * 3 measurement speeds per second with cryogenic sensor technology
- * Auto shut off
- * Low power protection
- * 2 YEAR WARRANTY INCLUDING SENSOR

Paint Thickness Gauge (Wurth)

Product Information

LCD Screen

Measurement accuracy (%) 3 %

Length measurement error (+/-) +/- 2 µm

Min./maks. temperature conditions 0 ila 50 °C

Min. temperature conditions 0 °C

Maks. temperature conditions 50 °C

Length 100 mm

Width 60 mm



Fully electronic coating thickness gauge for detection of coatings (e.g. paint, corrosion protection coating thickness)

One-hand operation with multi-function button

Automatic change according to floor material

Reliable, fast measurements that do not require calibration

Manual substrate change by the user is also possible

High measuring accuracy over the entire measuring range

Wide application range (steel, iron and non-ferrous metals such as aluminium, zinc, copper and brass) thanks to double probe

Compact design with integrated measuring probe

Long-term use with precise measurements thanks to polished ruby measuring heads

Innovative technology: Hall sensors and Eddy current technology

Acoustic signal at the start of the measurement

Auto on/off

Backlit graphic LCD display shows measured value, battery status, unit of measurement and operating mode

Measuring display approx. 15 seconds

Measuring range (FE/N Fe)

0–3000 µm (µm/spindle change)

Measurement time interval

Separate measurement: 600 ms

Viewing the measurement

0.0-999 µm to 1000 µm in mm

smallest measuring surface 10 x 10mm

Smallest radius of curvature

Convex: 5mm

Concave: 25mm

Minimum thickness of floor material

Fe: 0.2mm

N Fe: 0.05 mm

Diagnosetic Tool (Wow - Snooper+)

Wireless diagnostic interface Snooper+ with Bluetooth connection. It provides ergonomic operation with integrated LED status display and mounting bracket. Flight recorder provides mobile data logging without the need for passengers.

Weight: 480 g

Width: 85mm

Length: 180mm

Height: 30mm

Cable length: 1600 mm

min./max. temperature conditions: -20 - 70 °C

min./max. rated voltage: 6 / 36 V/DC



Diagnosetic Tool Features

Wireless operation with Bluetooth

Rubber surface for secure grip during transport

Optical process feedback with colored LEDs

Bracket allows mounting to glass

16-pin plug with integrated LED lamp for easy diagnostic socket locating

Diagnosetic Tool (Autel MX808)

Euro Mini offers its users basic diagnostic functions with a wired connection. It is a fast, functional, comprehensive, fault detection device with different technological features that every service needs.

In all brains of more than 100 brand vehicles; Allows you to perform troubleshooting.

It can perform fault reading, deletion, display of live values, activation, reset operations, coding and adaptations in all electronic control units in the vehicle in a very short time. Thanks to 11 service-maintenance functions, it performs the operations in the shortest way. There is no Bluetooth feature.

Technical Data

OS : Android 7.0

CPU: 1.5 Ghz 4 core

Internal memory : 1GB

Memory : 16 GB

Batery : 6000mAh

Screen : 7" Capacitive touch screen

Working conditions : 0 - 50 degree

Dimension : 246x139.5x34



How to Determine Original Mileage (KM) in Vehicles?

In the Autel Mx808 diagnostic device, besides vehicle diagnosis and service operations, one of the most needed operations for Auto Expertise, Auto Gallery or Vehicle Purchase and Sale companies is to detect and display the original mileage (km) information on the vehicles.

Since the Mx808 Fault Detector is the original mileage detector, there is no need to query the km information from each ECU unit one by one as in other devices.

In our product, there is a screen to query the Km information with a single button.

Thanks to this function, the vehicle's Engine, Abs, Transmission, Tpms Tire Pressure Sensor, Immo etc. lists the original Km information over all ECUs.

Dynamometer Fan

During the dynamometer test, the vehicle's real road standards

It is a cooling fan in accordance with TSE standards in order to take accurate measurements.

Technical Data

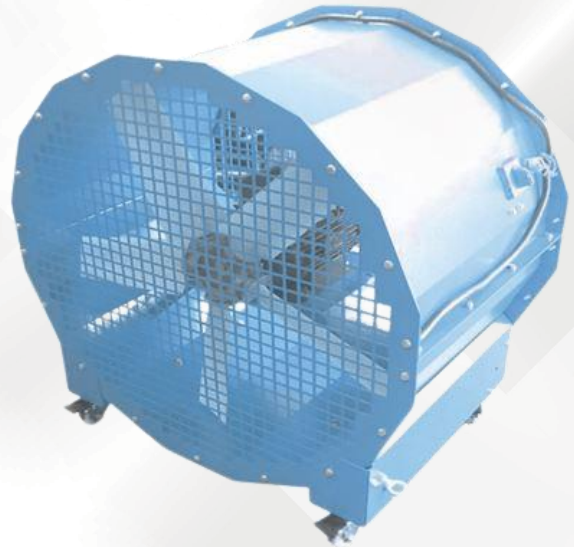
Product model : AK-7001

Engine power (KW): 2.2

Supply : 380

RPM (d/dk): 1500

Air Flow (m³ / h): 23000



Compressor

Compressors are usually electric, diesel or gasoline engine, etc. as the driving force. It is a machine that converts mechanical energy into pressure energy by using Compressor is used in many applications to compress a gas liquid or increase air pressure.

Technical Data

Weight : 59 kg

Pressure : 8 bar

Tank Capacity : 100 Lt

Air Intake : 300 Lt/dk

Engine power : 3 Hp - 220 Volt

Technical Data

Power (Watt): 1500-2000 Watt

Tank Capacity : 100-150 Lt

Power type = Cable





Girne Mah. Irmaklar Sk. No:71/A
Maltepe / İstanbul

+90 (530) 348 35 89
info@bimateknoloji.com
www.bimateknoloji.com

